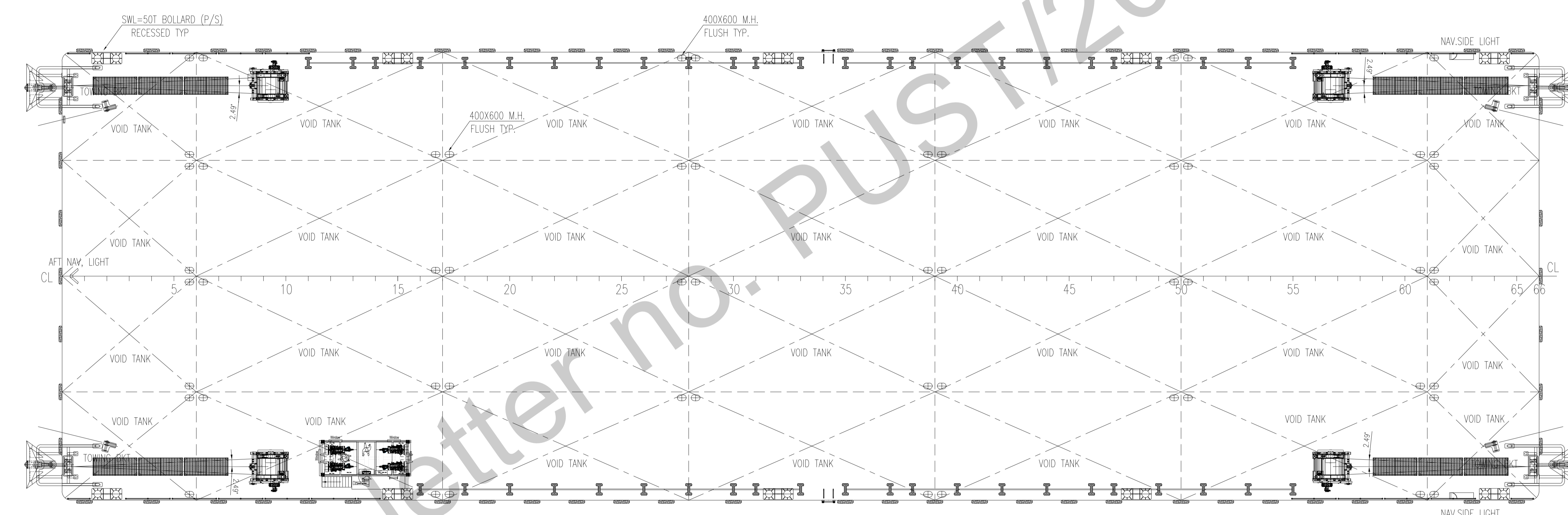
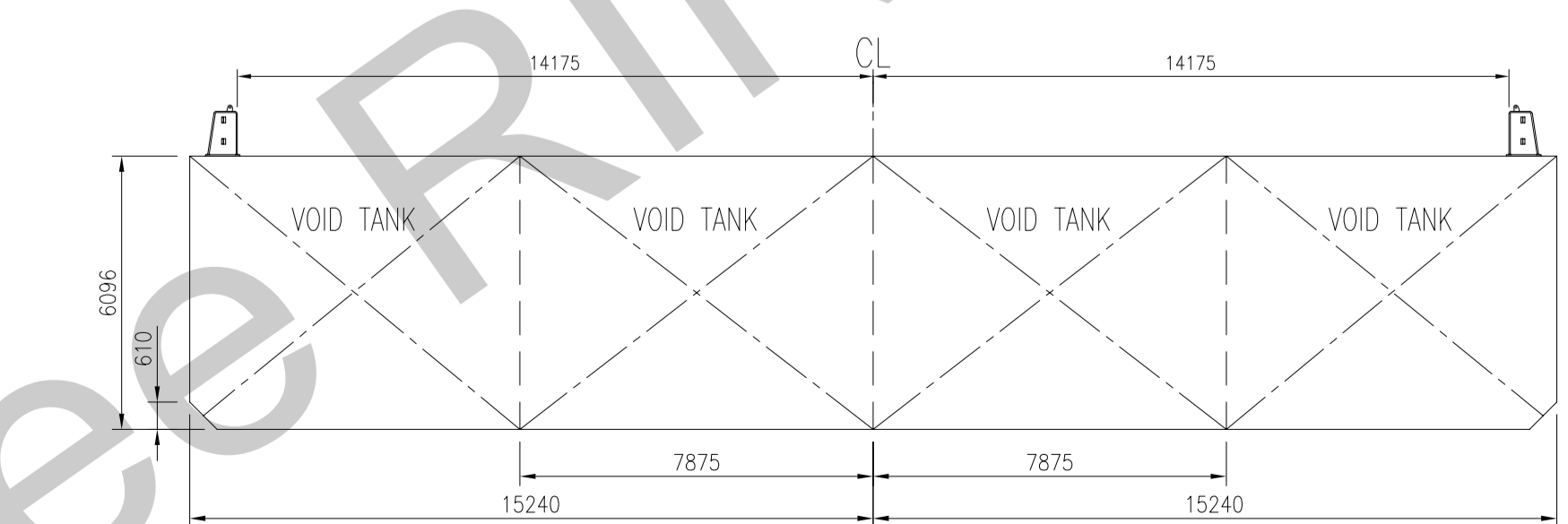


PROFILE

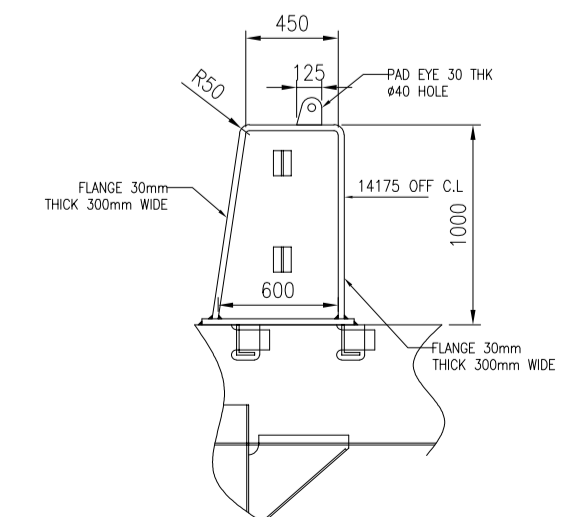


MAIN DECK PLAN



SECTION VIEW

PRINCIPAL DIMENSIONS	
LENGTH (O.A)	100.584M (330')
BREADTH (MLD.)	30.480M (100')
DEPTH (MLD.)	6.096M (20')
DESIGN DRAUGHT (MLD.)	4.70M
DECK LOADING	20T/M ²
FRAME SPACE	1524 MM



STANCHION DETAILS

RI103961



Filed
For information/ Per informazione

PUST/0000021038
30 Jan 2023
DOO HWAN HAN

See letter: PUST/2023/42/HDH

14/12/2022	W.B.T CHANGE TO VOID TANK & ISSUE FOR APPROVAL	-	2
12/12/2022	UPDATED THE DECK EQUIPMENT & ISSUE FOR APPROVAL	-	1
28/11/2022	ISSUE FOR APPROVAL	-	0
DATE	DESCRIPTION OF MODIFICATION	BY	REV
<div><div>JWA</div><div>Justin Wee & Associates</div><div>Naval Architects & Marine Consultants</div><div>Justin Wee & Associates Pte Ltd, Co Reg No.: 201712890K</div><div>Office: (65) 64440039, E-mail: info@jwa.com.sg, Website: www.jwa.com.sg</div></div>			
SHIP DESIGNER			
VESSEL			
HWANG CHANG NO-3 330'x100'x20'_DECK CARGO BARGE			
TITLE			
GENERAL ARRANGEMENT			
OWNER/OPERATOR		SHIP BUILDER	
-		KIM HENG SHIP BUILDING & ENGINEERING PTE LTD	
CLASSIFICATION		HULL NUMBER	
RINA		-	
DRAWN	CHECKED	SCALE	DRAWING NUMBER
-	-	1:150/A1	J1329-101-00-R1
28.11.22	28.11.22		1
THIS ENGINEERING PLAN, TOGETHER WITH THE INFORMATION IT CONTAINS, IS COPYRIGHT AND IS THE EXCLUSIVE PROPERTY OF JUSTIN WEE & ASSOCIATES PTE LTD. IT IS NOT TO BE COPIED, IN WHOLE OR IN PART, OR DISCLOSED TO ANY THIRD PARTY, OR REPRODUCED FOR COMMERCIAL PURPOSES, WITHOUT PRIOR PERMISSION IN THE FORM OF WRITTEN CONSENT.			